

# Bastille

DATASHEET

# Bastille FlyAway Kit



# Real-Time, 24/7, 100% Passive RF Monitoring Delivering Accurate Cellular, Bluetooth, BLE and Wi-Fi Device Detection, Identification and Location

Bastille is the established leader in real-time Cellular, Bluetooth, Bluetooth Low Energy (BLE) and Wi-Fi detection and location systems. The Bastille FlyAway Kit offers a portable and rapid set-up solution for temporary and forward deployed locations. Set up in a couple of hours, the Bastille FlyAway Kit can detect and locate unauthorized and authorized Cellular, Bluetooth, BLE and Wi-Fi devices operating within an area up to 5,000 sq. feet such as a conference meeting room, tent site, remote office, hotel room or speaking location.

## Fully Self-contained, Deployable Bastille System in a Pelican case

**Detect and locate Wi-Fi, Bluetooth and BLE devices in 30 minutes and cellular phones in 90 minutes**

- **All you need:** Pelican case, 5 sensors, mini-switch, laptop, cat6 cables
- **Same GUI as Bastille Enterprise:** Shows dots on a map for device location
- **Rapid deployment:** Detect and locate Wi-Fi, Bluetooth and BLE devices in 30 minutes and cellular phones in 90 minutes
- **Deployment-ready:** Laptop-based fusion center and GUI
- **Stand-alone system:** (Option to upload to the Enterprise version post deployment)

### Example use cases

- **Enforce 'No Cell Phone' or device policy:** Enforce no cell phone policy for a temporary or forward deployed facility
- **Secure meetings areas:** Detect transmitting electronic devices in secure meeting areas
- **Prevent voice and data exfiltration:** Detect wireless devices and Red Alert Upon events such as Bluetooth Pairing
- **Scan tent sites, buildings and remote offices:** Scan a room or building to understand the presence and location of all emitters/transmitters and building systems
- **TSCM:** Scan and monitor an area for unapproved electronic devices
- **Extend Bastille Enterprise to remote offices:** Deliver Bastille's capabilities to a remote office or temporary location

FlyAway Kit: Shipping Units

Pelican: 1690 x 2

Weight: 85 lbs. x 2

Dim: 33.4 x 28.4 x 18.2" 84.8 x 72.1 x 46.2 cm



Figure 1: Closed FlyAway Kit



Figure 2: Open FlyAway Kit

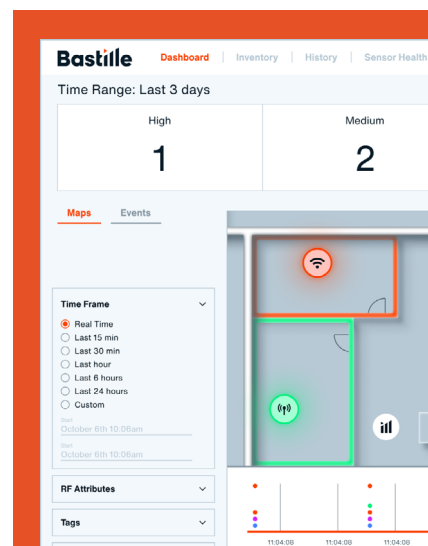


Figure 3: The Bastille FlyAway Kit goes from Pelican Case to Detecting and Locating first Devices in around 30 minutes.

# Detect, Identify and Locate Personal Electronic and Other Wireless Devices or Networks

Outside of secure facilities, government employees and military operatives may have some combination of a cell phone in their pocket, a Bluetooth Low Energy linked health monitor on their wrist, a Wi-Fi enabled tablet in their backpack and a Bluetooth headset, or maybe a Bluetooth enabled hearing aid. However, when they enter a secure facility— be it a permanent location or temporary one, which wireless devices they can use, how they can use them and when changes dramatically. Whereas cell phones may never be allowed in the most sensitive of areas, and especially in certain temporary locations, agencies are increasingly willing to allow certain other authorized wireless devices for some people, some or all of the time.

Bastille gives you visibility into the wireless devices in your space. Where they are and if/when they pair to other devices. This allows for 24x7 enforcement of device policy for Wi-Fi, Cellular, Bluetooth and BLE protocols, even if the devices are inadvertently brought into areas where they should not be brought into, or inadvertently not put in airplane mode. If your policy is 'No Cell Phones' Bastille will detect all cell phones if they enter a secure area. If you need to permit certain operatives to bring an approved tablet into a secured area, we will permit that device, but alert if similar unapproved devices attempt to enter the same space. Also, if an unapproved device is brought into a facility powered down, we will alert when that device is powered on.

## Bastille FlyAway Kit features include:

- Cellular, Bluetooth, Bluetooth Low Energy (BLE) and Wi-Fi device detection
- Location of devices with a dot on a floor-plan map
- Detailed device information up to 150 fields per device
- DVR and forensics
- Rapid deployment: detect and locate Wi-Fi, Bluetooth and BLE devices in 30 minutes and Cellular phones in 90 minutes
- Runs with or without monitoring for an hour, day, week, month or more
- Coverage area 5,000 sq. ft
- FCC certified 100% passive operation
- Future Proofed Software Defined Radio (SDR) sensor arrays



Figure 4: NTS Certification 100% Passive Operation



Figure 5: Bastille Sensor Array



Figure 6: Convenient Storage

# Typical workflow with Bastille FlyAway Kit

## 01

### BASELINE

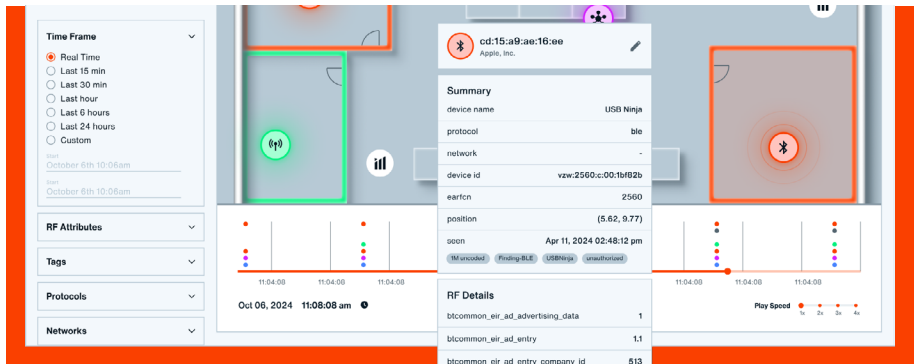
Scan an area to create a base-line, identify devices and networks



## 02

### AUTHORIZE/REMOVE

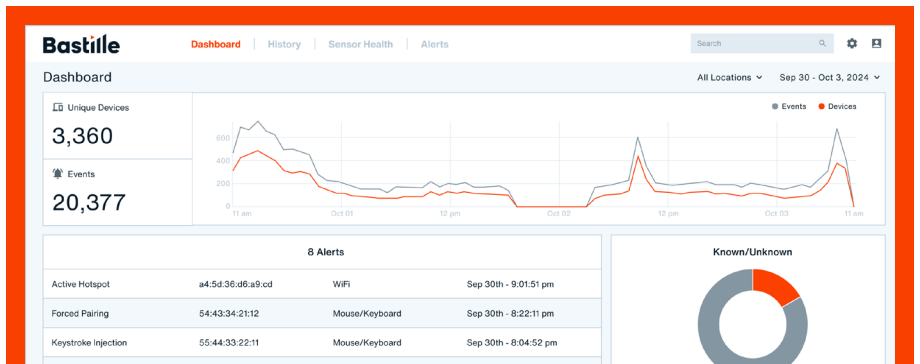
Authorize, remove or disable devices/systems



## 03

### MONITOR

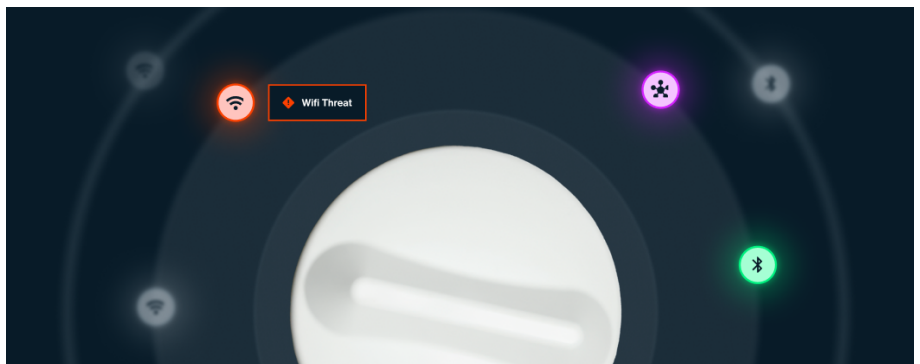
Monitor for and alert when new devices/networks arrive



## 04

### EXIT SCAN

Compare end deployment scan to initial baseline scan and act upon any changes



# Bastille Solutions for Commercial Customers

Bastille is available as a permanent installation or as a mobile tactical kit, with a variety of deployment scenarios. Many customers buy multiple products to satisfy their varying needs across their global environments. All Bastille products have the same GUI, Sensor Arrays and can detect the same protocols and devices. Below is a brief summary of the key features by product version for non-government customers. Please note that government customers have different products.

Key Features	Bastille Enterprise	Bastille Express XLE	Bastille Express
<b>Passive FCC Certified Software Defined Radio Sensor Arrays</b>	✓	✓	✓
<b>Wi-Fi, BT, BTLE, 802.15.4 and Cellular Visibility</b>	✓	✓	✓
<b>DVR</b> (Playback of Historical Data)	✓	✓	✓
<b>Tagging and Adjudication Workflow</b>	✓	✓	✓
<b>Same Intuitive Easy-to-use Graphical User Interface</b>	✓	✓	✓
<b>Real-Time Enterprise Infrastructure Integrations</b>	✓	✓	✓
<b>API Module</b>	Option	Included	✗
<b>Number of Sensors</b>	Unlimited	12 – Expandable to 50	5
<b>Coverage</b>	Millions of sq. ft.	Up to 20,000 sq. ft. Per Deployment – Expandable	Up to 5,000 sq. ft. Per Deployment
<b>Simultaneous Areas Covered</b>	Unlimited	Three	One
<b>Typical Installation</b>	Above or Below Ceiling	Tripod	Tripod
<b>Use Case Type</b>	Permanent	Portable/Tactical	Portable/Tactical

# Sensor Deployment

The Bastille FlyAway Kit is a fully self-contained unit for real-time, 24/7 Cellular, Bluetooth, BLE and Wi-Fi Device Detection, Identification and Location. It covers an area up to 5,000 square feet and can detect and locate Wi-Fi, Bluetooth and BLE devices within 30 minutes, and Cellular phones within 90 minutes.

**The Bastille FlyAway Kit includes all necessary components for field use:**



Use the power of Bastille to detect, locate and alert on WI-FI, BLE, Bluetooth and Cellular devices in remote and temporary locations.



Figure 7: Example Sensor On Tripod

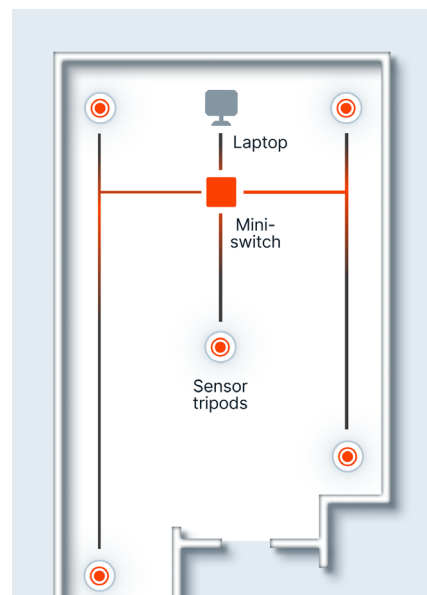


Figure 8: Bastille FlyAway Kit In Use

## Bastille

### About us

Bastille specializes in providing security solutions for wireless environments. Bastille uses a network of Software-Defined Radios (SDRs) to continuously monitor a facility's entire wireless environment, including cellular, Bluetooth Classic, Bluetooth Low Energy (BLE), Wi-Fi, Zigbee, and other protocols. Our sensors detect, analyze, and localize transmissions in real time, providing a comprehensive view of wireless activity.

Bastille's system goes beyond just identifying signals; it analyzes data to uncover real-time and long-term threats. By capturing the entire wireless spectrum, Bastille offers unparalleled visibility into potential security risks, empowering organizations to proactively safeguard their wireless infrastructure.

### Learn more

To learn more please visit [www.bastille.net](http://www.bastille.net)

Or follow us on

